

Workers' Compensation New Claims FY 2006 - 2007

Division	Quarter 1				Quarter 2				Quarter 3				Quarter 4				FY07** Total	FY 06 Total	Avg. FY07 Head Count	Claims /100 Head Count
	Jul	Aug	Sep	Q1 Total	Oct	Nov	Dec	Q2 Total	Jan	Feb	Mar	Q3* Total	Apr	May	Jun	Q4 Total				
A&ES	9	8	4	20	9	3	4	16	4	3	3	10					46	69	2593	2.66
Administration	13	18	14	44	12	14	12	38	17	10	17	44					126	187	1726	10.83
Bio Sci	3	4	1	8	1	3	1	5	0	0	1	1					14	14	1011	1.38
Chancellor/Provost	1	1	0	2	2	0	0	2	0	0	1	1					5	9	651	1.38
DANR	1	4	4	9	5	6	1	12	3	5	3	11					32	36	896	4.02
Engineering	0	0	1	1	0	0	2	2	1	0	1	2					5	17	1021	1.67
Grad Studies	0	0	0	0	0	0	0	0	0	0	1	1					1	3	135	2.22
I&ET	2	2	0	4	0	0	1	1	0	1	1	2					7	8	383	2.09
L&S	1	3	3	7	3	6	2	11	5	1	6	12					30	31	2194	1.41
Law	0	0	0	0	0	1	0	1	0	1	0	1					2	2	168	1.19
Library	1	1	2	4	1	2	1	4	2	1	1	4					12	9	323	2.79
Med School	6	5	4	15	4	8	9	21	3	6	5	14					49	53	3277	1.62
ORMP	0	0	0	0	0	1	0	1	0	0	0	0					1	3	56	5.36
Research	11	12	5	28	7	4	8	19	2	10	4	16					63	95	1015	9.36
Sch of Education	0	0	0	0	0	0	0	0	0	0	0	0					0	1	127	0.79
Sch of Management	0	0	0	0	0	0	0	0	0	0	0	0					0	2	84	2.38
Student Affairs	9	7	4	19	6	6	2	14	7	6	8	21					54	108	2622	4.12
Univ Relations	1	2	0	3	1	0	0	1	0	0	1	1					5	2	215	0.93
Vet Med	14	9	11	32	11	14	15	40	13	7	18	39					111	149	1797	8.29
Totals	72	76	53	196	62	68	58	188	57	51	71	180	0	0	0	0	563	798	20,294	2.77

*Total claims added for period 1/1/2007 - 3/31/2007

Note: Due to changes during the reporting history period, quarter totals may not be the sum of the monthly totals, and the FY07 year-to-date total may not be the sum of the quarter totals.

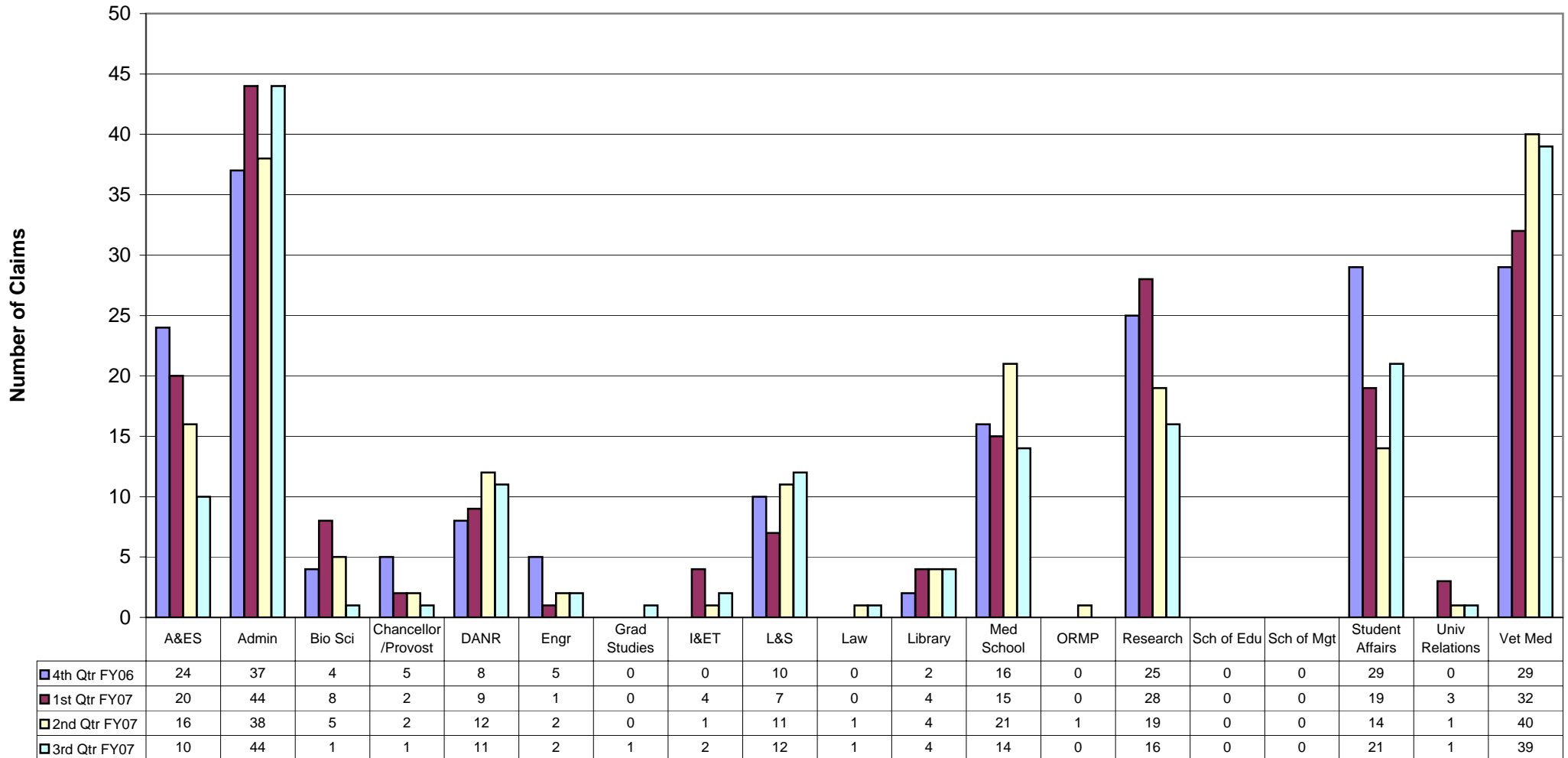
**FY06-07 Y-T-D total as of 3/31/2007

Workers' Compensation Claims FY2006 - 2007 Total Cost (Incurred)

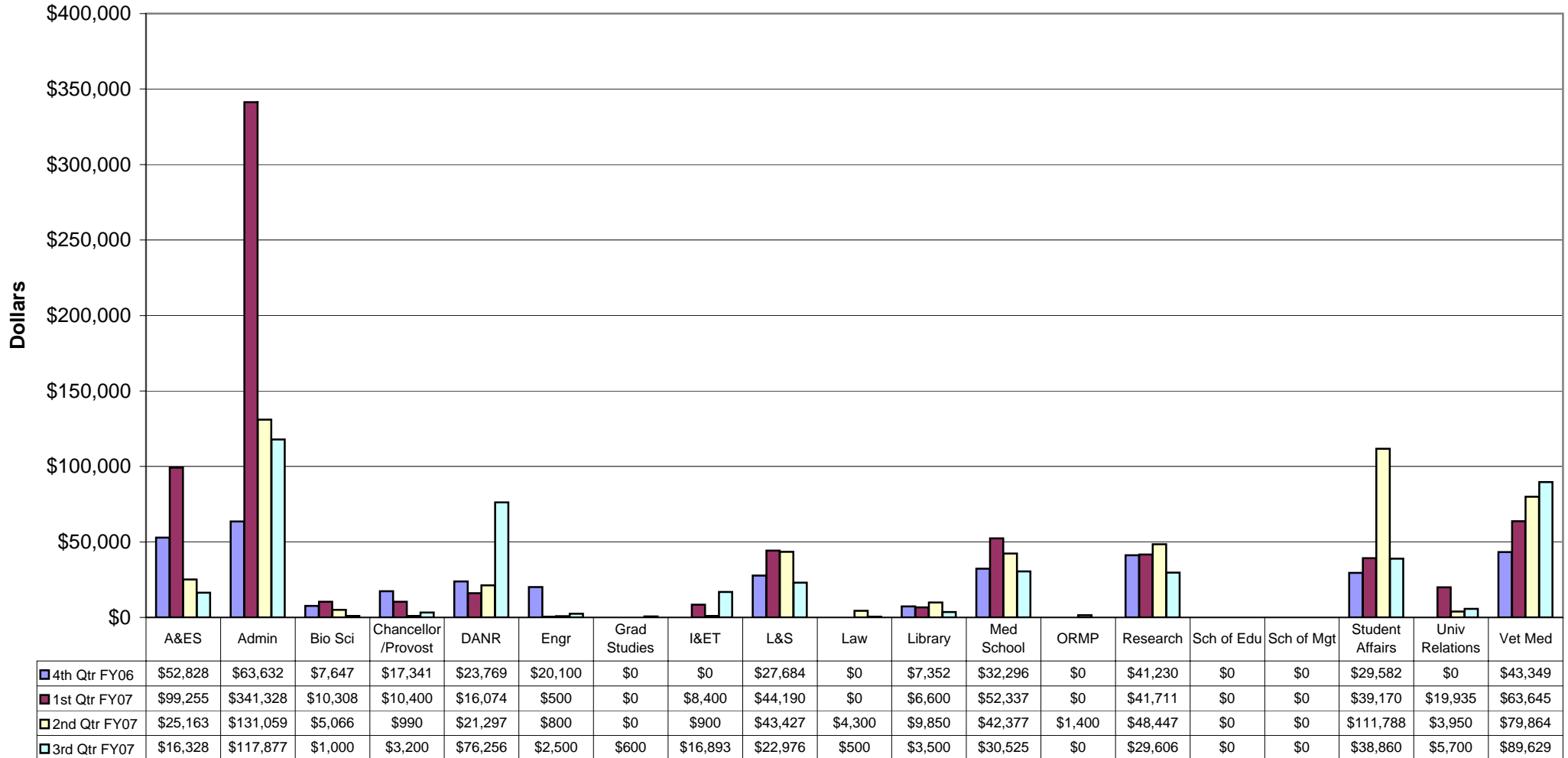
Division	Quarter 1				Quarter 2				Quarter 3				Quarter 4				FY07** Total	FY 06 Total	Avg. FY07 Head Count	Cost /100 Head Count
	Jul	Aug	Sep	Q1 Total	Oct	Nov	Dec	Q2 Total	Jan	Feb	Mar	Q3* Total	Apr	May	Jun	Q4 Total				
A&ES	12,250	14,450	67,860	99,255	19,376	1,288	4,500	\$25,163	7,400	1,000	4,000	\$16,328					\$129,091	\$140,967	2593	\$5,436
Administration	175,480	147,521	11,850	341,328	40,076	82,683	8,300	\$131,059	26,650	27,920	27,629	\$117,877					\$566,715	\$642,137	1726	\$37,204
Bio Sci	2,700	2,700	450	10,308	166	4,400	500	\$5,066	0	0	1,000	\$1,000					\$7,601	\$12,770	1011	\$1,263
Chancellor/Provost	2,600	6,200		10,400	990	0	0	\$990	0	0	3,200	\$3,200					\$59,935	\$43,763	651	\$6,722
DANR	1,912	0	7,150	16,074	6,397	11,900	3,000	\$21,297	55,582	16,538	11,100	\$76,256					\$118,508	\$209,805	896	\$23,416
Engineering	0	0	500	500	0	0	800	\$800	2,500	0	0	\$2,500					\$4,605	\$31,673	1021	\$3,102
Grad Studies	0	0		0	0	0	0	\$0	0	0	600	\$600					\$600	\$28,908	135	\$21,413
I&ET	0	4,450		8,400	0	0	900	\$900	0	16,393	500	\$16,893					\$21,231	\$19,677	383	\$5,138
L&S	0	6,150	35,040	44,190	13,866	21,561	8,000	\$43,427	13,550	2,250	9,900	\$22,976					\$80,973	\$128,019	2194	\$5,835
Law	0	0		0	0	4,300	0	\$4,300	0	500	0	\$500					\$4,800	\$1,327	168	\$790
Library	3,900	0	1,900	6,600	2,650	7,200	0	\$9,850	700	500	1,300	\$3,500					\$28,482	\$15,335	323	\$4,748
Med School	26,860	22,450	17,840	52,337	2,418	17,359	22,600	\$42,377	2,500	9,200	5,500	\$30,525					\$148,434	\$65,292	3277	\$1,992
ORMP	0	0		0	0	1,400	0	\$1,400	0	0	0	\$0					\$1,252	\$8,091	56	\$14,448
Research	17,631	10,076	8,000	41,711	20,183	8,638	19,625	\$48,447	800	17,826	4,450	\$29,606					\$118,750	\$185,060	1015	\$18,233
Sch of Education	0	0		0	0	0	0	\$0	0	0	0	\$0					\$0	\$0	127	\$0
Sch of Management	0	0		0	0	0	0	\$0	0	0	0	\$0					\$0	\$888	84	\$1,057
Student Affairs	7,600	5,900	800	39,170	3,020	108,268	500	\$111,788	3,800	2,500	20,204	\$38,860					\$192,644	\$207,468	2622	\$7,913
Univ Relations	8,200	11,710		19,935	3,950	0	0	\$3,950	0	0	5,700	\$5,700					\$25,290	\$1,150	215	\$535
Vet Med	18,425	19,300	14,775	63,645	19,685	29,379	30,800	\$79,864	35,750	22,401	32,316	\$89,629					\$257,460	\$245,393	1797	\$13,656
Totals	\$277,558	\$250,907	\$166,165	\$753,853	\$132,777	\$298,376	\$99,525	\$530,678	\$149,232	\$117,028	\$127,399	\$455,950	\$0	\$0	\$0	\$0	\$1,766,371	\$1,987,723	20,294	\$8,704

Note: Due to changes during the reporting history period quarter totals may not be the sum of the monthly totals, and the FY07 year-to-date total may not be the sum of the quarterly totals.

Frequency of Claims by Division Quarter Comparison 4th Quarter FY05-06 through 3rd Quarter FY06-07

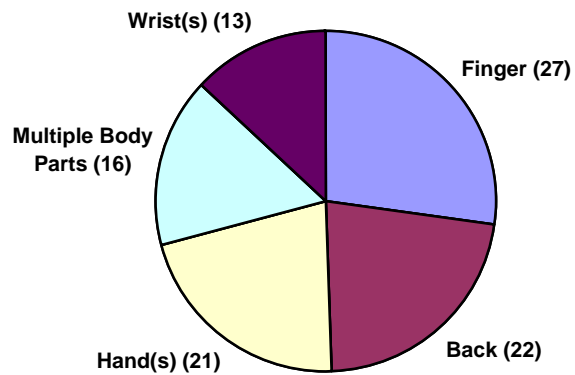


Cost of Claims by Division Quarter Comparison 4th Quarter FY05-06 through 3rd Quarter FY06-07



Injuries by Body Part Top Five by Frequency and Total Cost 3rd Quarter FY2006-2007

Frequency of Claims by Body Part
(Top Five)
3rd Quarter FY2006-2007



Total Cost of Injuries by Body Part
Top Five
3rd Quarter FY2006-2007

