

## Workers' Compensation New Claims FY 2005 - 2006

Division	Quarter 1				Quarter 2				Quarter 3				Quarter 4				FY06 Total	FY 05 Total	Avg. FY06 Head Count	Claims /100 Head Count
	Jul	Aug	Sep	Q1 Total	Oct	Nov	Dec	Q2 Total	Jan	Feb	Mar	Q3 Total	Apr	May	Jun	Q4* Total				
A&ES	10	3	5	18	8	5	0	13	5	7	3	14	10	6	9	24	69	74	2695	2.56
Administration	17	11	20	47	16	14	14	44	22	19	18	59	12	15	10	37	187	222	1730	10.81
Bio Sci	2	0	2	4	2	0	2	4	2	0	0	3	1	1	1	4	14	17	1016	1.38
Chancellor/Provost	0	1	0	1	1	1	0	2	0	0	1	1	2	2	1	5	9	19	622	1.45
DANR	1	6	5	12	2	3	4	9	2	2	3	7	1	3	4	8	36	39	865	4.16
Engineering	1	1	1	3	0	0	2	2	1	5	1	7	3	0	2	5	17	16	1071	1.59
Grad Studies	1	0	0	1	1	0	0	1	0	1	0	1	0	0	0	0	3	1	140	2.14
I&ET	1	1	0	2	0	1	2	3	0	0	2	2	0	0	1	0	8	4	373	2.14
L&S	2	3	0	5	6	1	2	9	4	2	1	7	2	3	5	10	31	28	2489	1.25
Law	0	0	0	0	0	0	0	0	0	2	0	2	0	0	0	0	2	2	156	1.28
Library	0	0	1	1	1	2	1	4	1	1	0	2	1	0	1	2	9	9	339	2.65
Med School	2	6	5	13	6	3	2	11	3	6	4	13	6	3	7	16	53	54	3183	1.67
ORMP	0	0	0	0	1	0	1	2	0	0	1	1	0	0	0	0	3	0	58	5.17
Research	5	11	6	22	12	6	4	22	6	10	9	25	8	7	10	25	95	90	962	9.88
Sch of Education	1	0	0	1	0	0	0	0	0	0	0	0	0	0	0	0	1	0	138	0.72
Sch of Management	1	0	0	1	1	0	0	1	0	0	0	0	0	0	0	0	2	0	82	2.44
Student Affairs	9	10	9	28	6	15	6	27	7	9	8	24	11	4	14	29	108	123	2849	3.79
Univ Relations	0	0	1	1	0	0	0	0	1	0	0	1	0	0	0	0	2	8	217	0.92
Vet Med	13	12	9	34	18	14	18	50	12	8	15	35	6	11	12	29	149	152	1798	8.29
<b>Totals</b>	<b>66</b>	<b>65</b>	<b>64</b>	<b>194</b>	<b>81</b>	<b>65</b>	<b>58</b>	<b>204</b>	<b>66</b>	<b>72</b>	<b>66</b>	<b>204</b>	<b>63</b>	<b>55</b>	<b>77</b>	<b>194</b>	<b>798</b>	<b>858</b>	<b>20,783</b>	<b>3.84</b>

\*Total claims added for period 4/1/2006 - 6/30/2006

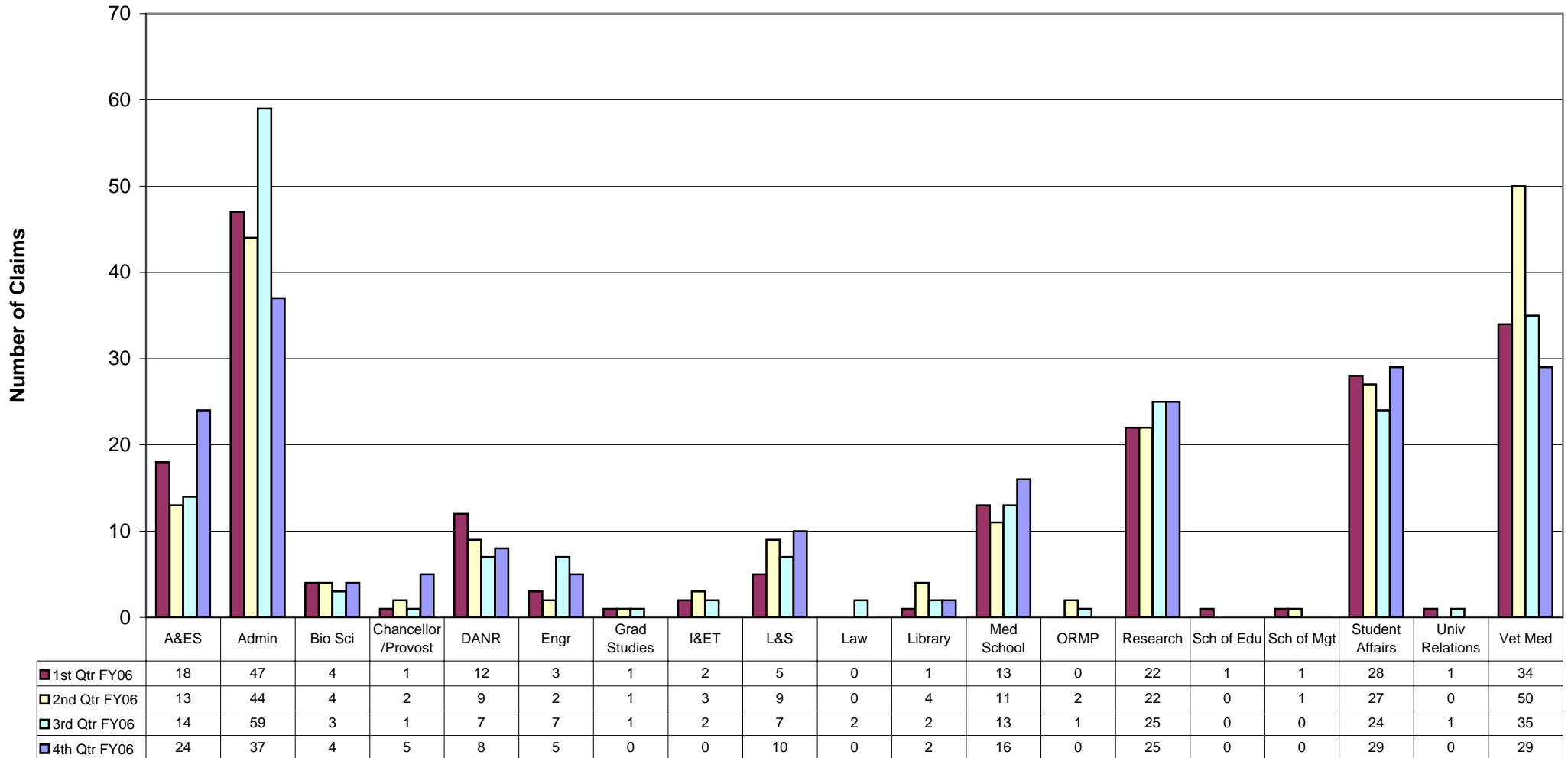
Note: Due to changes during the reporting history period, quarter totals may not be the sum of the monthly totals, and the FY06 year-to-date total may not be the sum of the quarter totals.

## Workers' Compensation Claims FY2005 - 2006 Total Cost (Incurred)

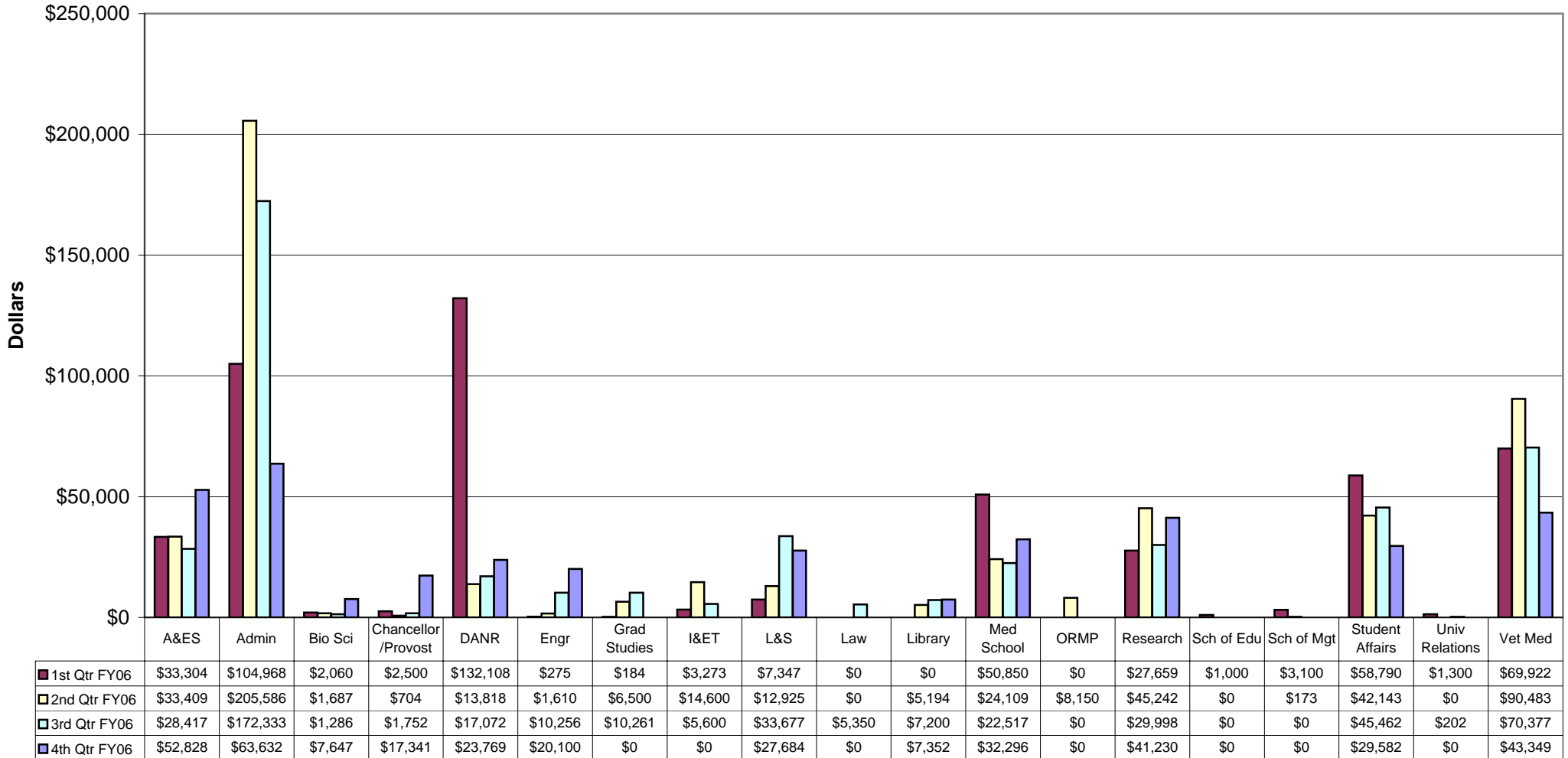
Division	Quarter 1				Quarter 2				Quarter 3				Quarter 4				FY06 Total	FY 05 Total	Avg. FY06 Head Count	Cost /100 Head Count
	Jul	Aug	Sep	Q1 Total	Oct	Nov	Dec	Q2 Total	Jan	Feb	Mar	Q3 Total	Apr	May	Jun	Q4* Total				
A&ES	15,784	9,260	6,900	\$33,304	19,653	8,600	0	\$33,409	0	6,100	15,203	\$28,417	18,650	9,200	14,629	\$52,828	\$140,967	\$300,790	2695	\$5,231
Administration	27,400	11,500	37,328	\$104,968	20,600	105,921	64,474	\$205,586	13,240	28,550	27,765	\$172,333	22,371	12,260	16,652	\$63,632	\$642,137	\$836,362	1730	\$37,118
Bio Sci	2,500	0	1,050	\$2,060	500	0	4,730	\$1,687	500	0	0	\$1,286	0	0	7,000	\$7,647	\$12,770	\$18,995	1016	\$1,257
Chancellor/Provost	0	0	0	\$2,500	100	600	0	\$704	0	0	1,752	\$1,752	9,632	1,800	6,200	\$17,341	\$43,763	\$30,927	622	\$7,036
DANR	100	12,695	113,688	\$132,108	2,000	8,054	7,800	\$13,818	600	0	1,400	\$17,072	3,900	9,099	9,971	\$23,769	\$209,805	\$219,527	865	\$24,255
Engineering	0	400	0	\$275	0	0	8,377	\$1,610	2,900	4,100	500	\$10,256	500	0	9,750	\$20,100	\$31,673	\$21,458	1071	\$2,957
Grad Studies	0	0	0	\$184	0	0	0	\$6,500	0	1,800	0	\$10,261	0	0	0	\$0	\$28,908	\$0	140	\$20,649
I&ET	1,500	2,900	0	\$3,273	0	0	16,785	\$14,600	0	0	5,600	\$5,600	0	0	0	\$0	\$19,677	\$6,334	373	\$5,275
L&S	900	2,300	0	\$7,347	8,450	1,500	10,650	\$12,925	18,096	3,000	0	\$33,677	250	4,250	15,350	\$27,684	\$128,019	\$47,810	2489	\$5,143
Law	0	0	0	\$0	0	0	0	\$0	0	4,850	0	\$5,350	0	0	0	\$0	\$1,327	\$20,937	156	\$851
Library	0	0	0	\$0	2,400	3,300	110	\$5,194	0	3,500	0	\$7,200	400	0	7,100	\$7,352	\$15,335	\$68,394	339	\$4,524
Med School	4,500	9,500	37,250	\$50,850	18,773	12,150	3,900	\$24,109	5,250	5,800	8,750	\$22,517	25,500	5,389	6,150	\$32,296	\$65,292	\$145,705	3183	\$2,051
ORMP	0	0	0	\$0	3,000	0	600	\$8,150	0	0	0	\$0	0	0	0	\$0	\$8,091	\$0	58	\$13,950
Research	2,300	8,800	5,800	\$27,659	9,947	5,250	7,132	\$45,242	1,750	8,650	7,300	\$29,998	14,229	9,050	18,441	\$41,230	\$185,060	\$168,611	962	\$19,237
Sch of Education	0	0	0	\$1,000	0	0	0	\$0	0	0	0	\$0	0	0	0	\$0	\$0	\$0	138	\$0
Sch of Management	3,100	0	0	\$3,100	600	0	0	\$173	0	0	0	\$0	0	0	0	\$0	\$888	\$0	82	\$1,083
Student Affairs	14,244	26,066	2,100	\$58,790	5,700	10,200	14,100	\$42,143	5,800	8,010	23,347	\$45,462	13,150	2,720	14,150	\$29,582	\$207,468	\$246,629	2849	\$7,282
Univ Relations	0	0	1,300	\$1,300	0	0	0	\$0	1,000	0	0	\$202	0	0	0	\$0	\$1,150	\$19,398	217	\$530
Vet Med	5,203	19,150	18,294	\$69,922	25,200	14,250	51,200	\$90,483	15,849	21,364	37,757	\$70,377	4,700	24,389	14,150	\$43,349	\$245,393	\$364,623	1798	\$13,648
<b>Totals</b>	<b>\$77,531</b>	<b>\$102,571</b>	<b>\$223,710</b>	<b>\$498,640</b>	<b>\$116,923</b>	<b>\$169,825</b>	<b>\$189,858</b>	<b>\$506,333</b>	<b>\$64,985</b>	<b>\$95,724</b>	<b>\$129,374</b>	<b>\$461,760</b>	<b>\$113,282</b>	<b>\$78,157</b>	<b>\$139,543</b>	<b>\$366,810</b>	<b>\$1,987,723</b>	<b>\$2,516,500</b>	<b>20,783</b>	<b>\$9,564</b>

Note: Due to changes during the reporting history period quarter totals may not be the sum of the monthly totals, and the FY06 year-to-date total may not be the sum of the quarterly totals.

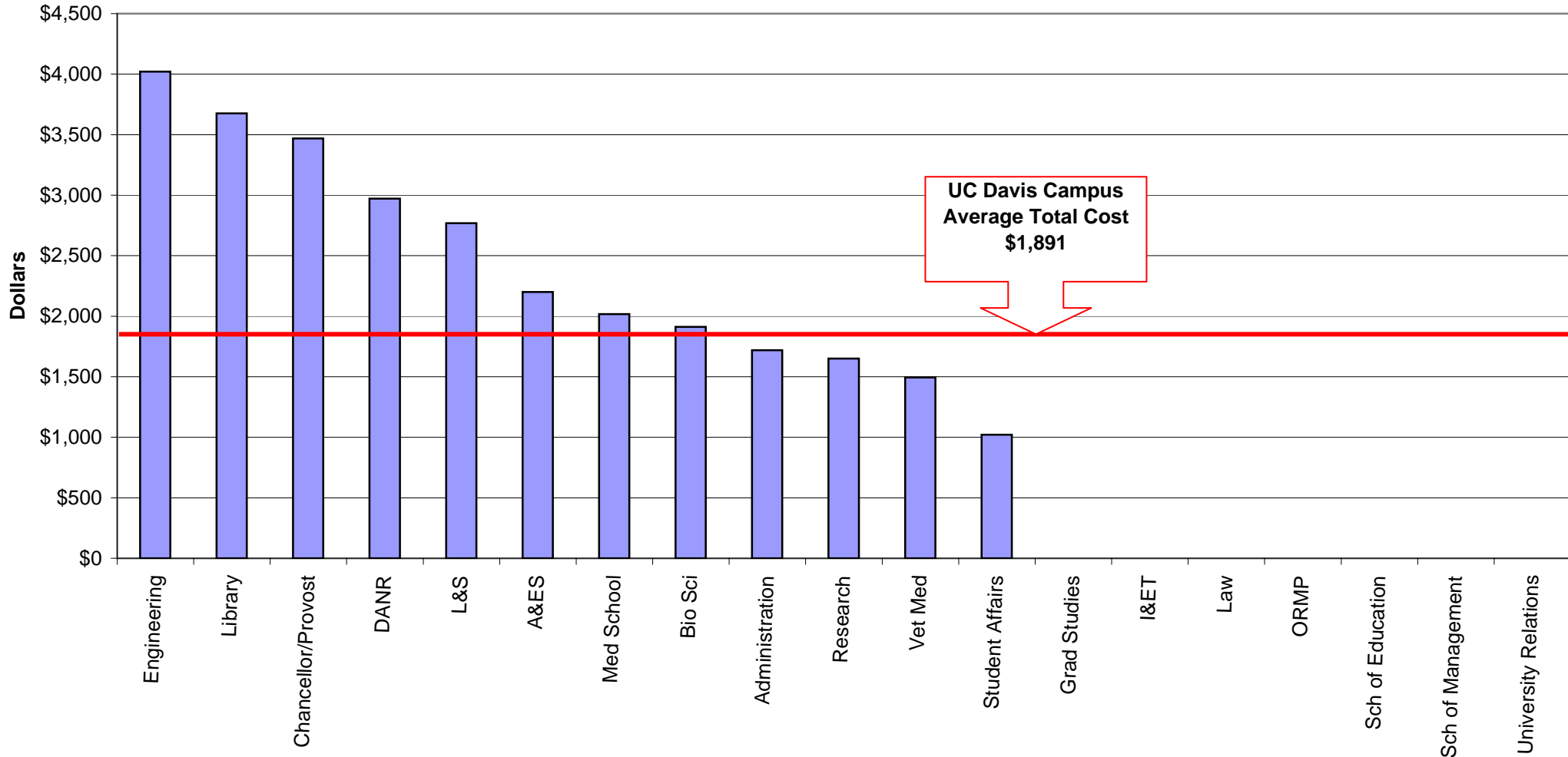
### Frequency of Claims by Division Quarter Comparison 1st Quarter FY05-06 through 4th Quarter FY05-06



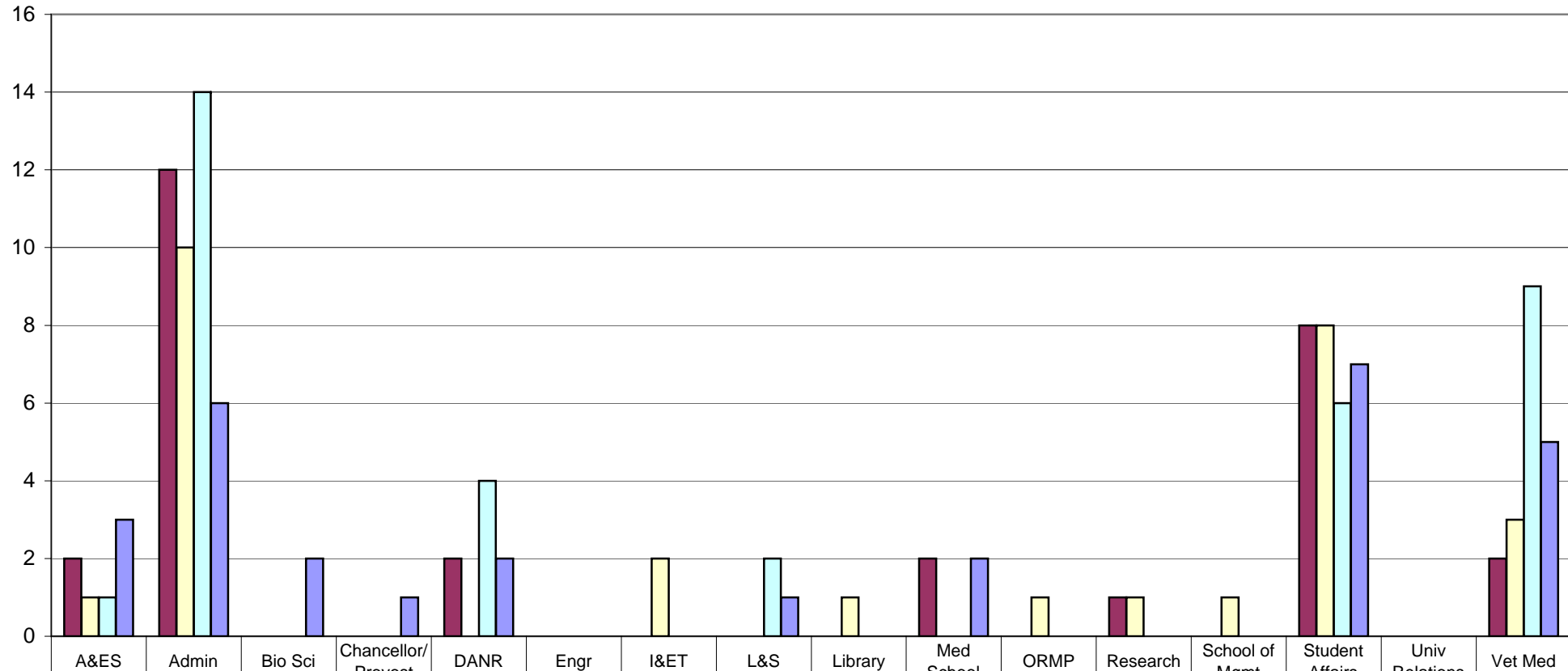
### Cost of Claims by Division Quarter Comparison 1st Quarter FY05-06 through 4th Quarter FY05-06



### Average Total Cost by Division in Descending Order 4th Quarter FY2005-2006

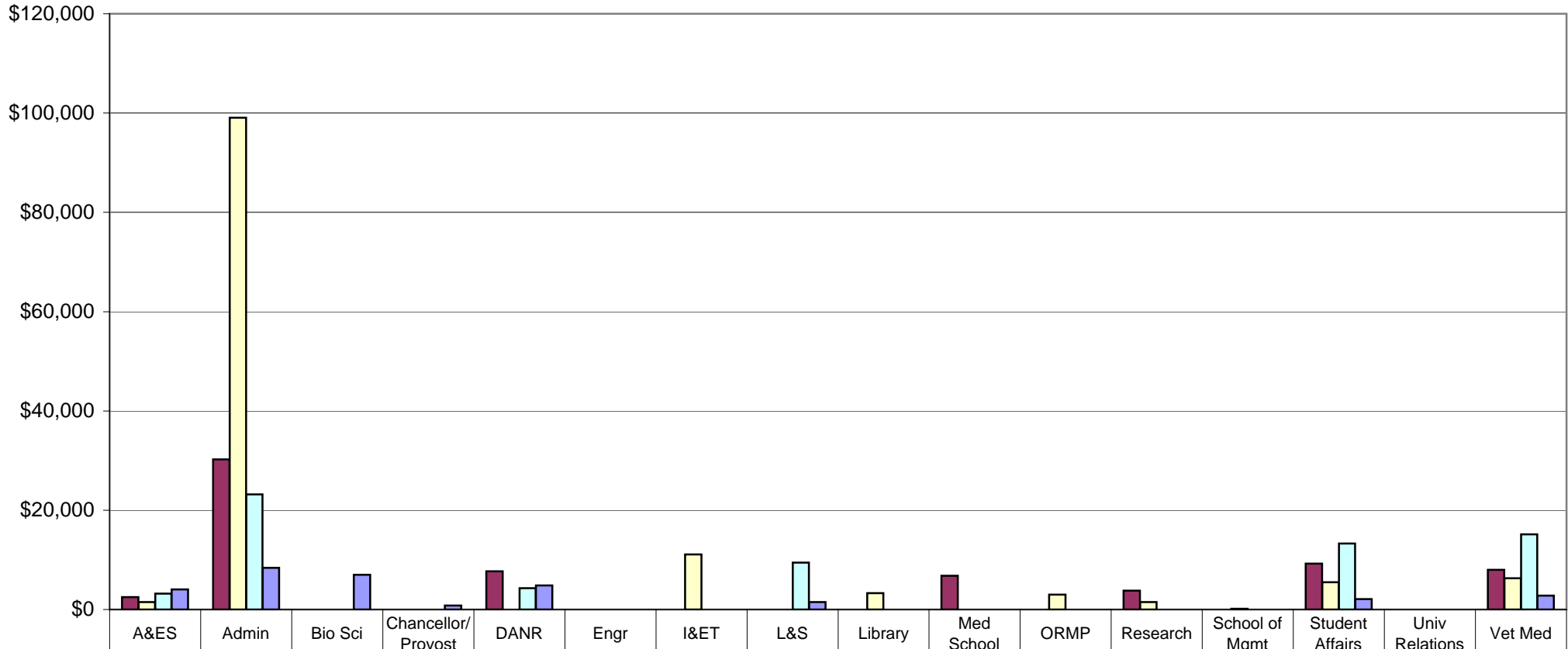


### Frequency of Back Injuries by Division Quarter Comparison 1st Quarter FY05-06 through 4th Quarter FY05-06



	A&ES	Admin	Bio Sci	Chancellor/ Provost	DANR	Engr	I&ET	L&S	Library	Med School	ORMP	Research	School of Mgmt	Student Affairs	Univ Relations	Vet Med
■ 1st Qtr FY06	2	12	0	0	2	0	0	0	0	2	0	1	0	8	0	2
■ 2nd Qtr FY06	1	10	0	0	0	0	2	0	1	0	1	1	1	8	0	3
■ 3rd Qtr FY06	1	14	0	0	4	0	0	2	0	0	0	0	0	6	0	9
■ 4th Qtr FY06	3	6	2	1	2	0	0	1	0	2	0	0	0	7	0	5

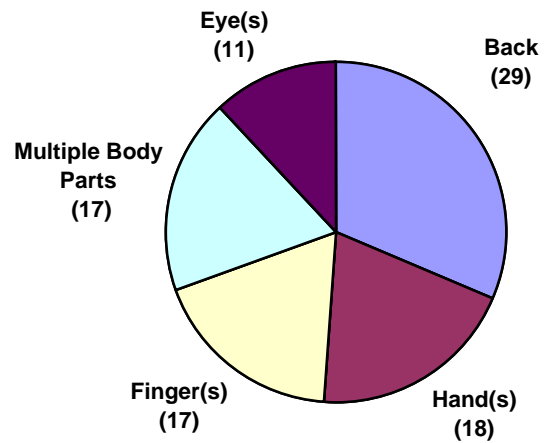
### Cost of Back Injuries by Division Quarter Comparison 1st Quarter FY05-06 through 4th Quarter FY05-06



	A&ES	Admin	Bio Sci	Chancellor/ Provost	DANR	Engr	I&ET	L&S	Library	Med School	ORMP	Research	School of Mgmt	Student Affairs	Univ Relations	Vet Med
■ 1st Qtr FY06	\$2,490	\$30,241	\$0	\$0	\$7,695	\$0	\$0	\$0	\$0	\$6,800	\$0	\$3,800	\$0	\$9,225	\$0	\$8,016
■ 2nd Qtr FY06	\$1,500	\$99,039	\$0	\$0	\$0	\$0	\$11,100	\$0	\$3,300	\$0	\$3,000	\$1,500	\$173	\$5,500	\$0	\$6,311
■ 3rd Qtr FY06	\$3,200	\$23,169	\$0	\$0	\$4,300	\$0	\$0	\$9,438	\$0	\$0	\$0	\$0	\$0	\$13,318	\$0	\$15,148
■ 4th Qtr FY06	\$4,051	\$8,400	\$7,000	\$800	\$4,849	\$0	\$0	\$1,500	\$0	\$0	\$0	\$0	\$0	\$2,113	\$0	\$2,800

### Injuries by Body Part Top Five by Frequency and Total Cost 4th Quarter FY2005-2006

Frequency of Claims by Body Part  
(Top Five)



Total Cost of Injuries by Body Part  
Top Five

